

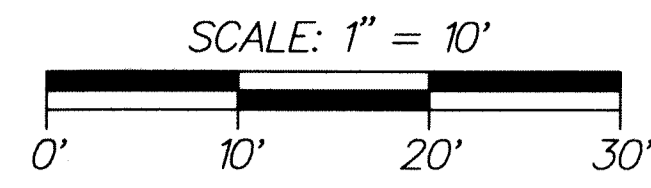
LAKE IDA PLACE

BEING A REPLAT OF A PORTION OF LOT 37, SECTION 9, TOWNSHIP 46 SOUTH, RANGE 43 EAST, ACCORDING TO THE PLAT THEREOF AS RECORDED IN PLAT BOOK 1, PAGE 4 (P.R.P.B.CO.), BEING IN SECTION 9, TOWNSHIP 46 SOUTH, RANGE 43 EAST, CITY OF DELRAY BEACH, PALM BEACH COUNTY, FLORIDA

SHEET 2 OF 2

THIS INSTRUMENT WAS PREPARED BY PAUL D. ENGLE, IN THE OFFICE OF O'BRIEN, SUTTER & O'BRIEN, INC., 955 N.W. 17TH AVENUE, SUITE K-1, DELRAY BEACH, FLORIDA 33445 (561) 276-4501

SWINTON HEIGHTS (PLAT BOOK 24, PAGE 120)

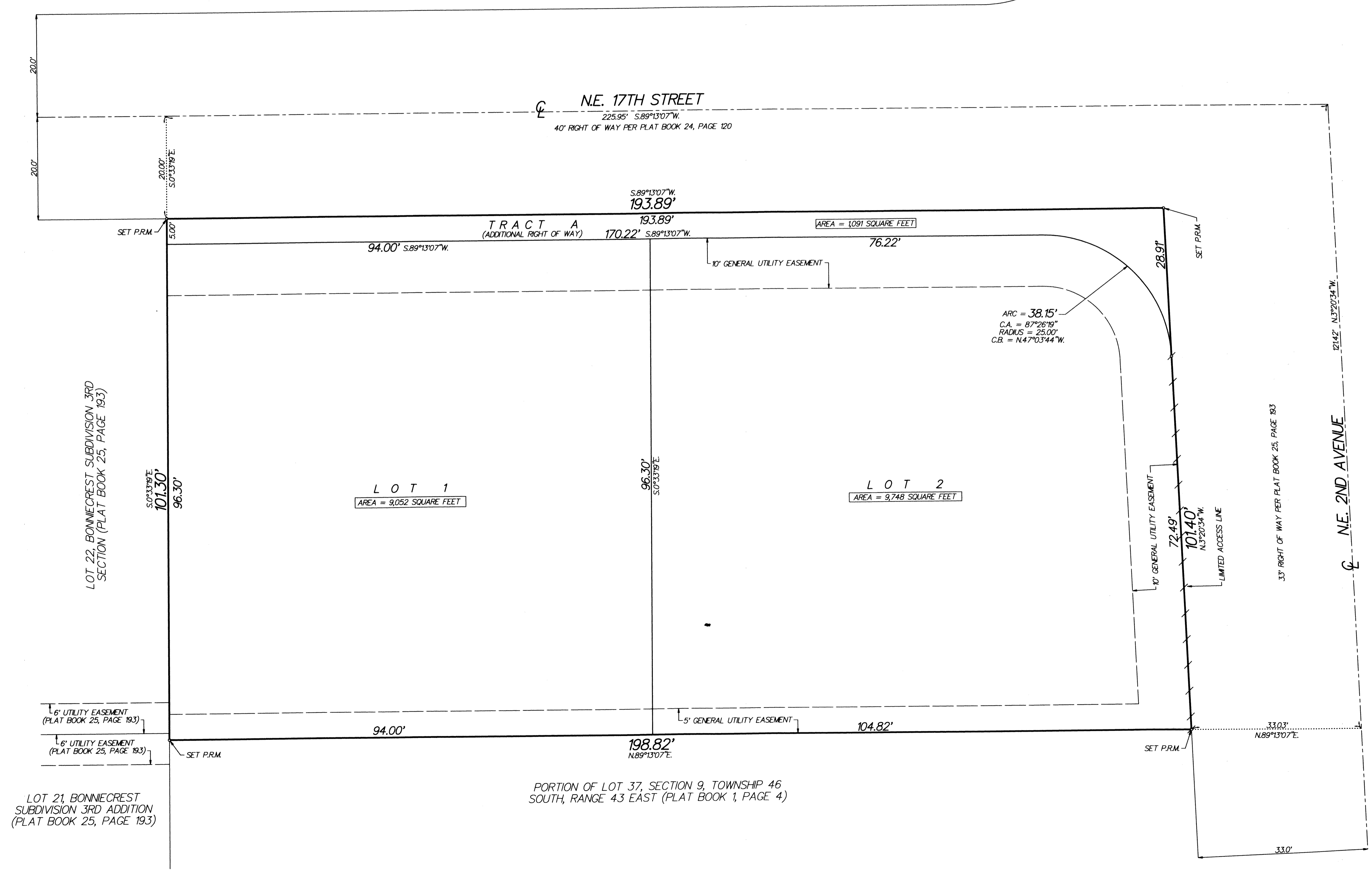


LEGEND:

- CL = CENTERLINE
- PRM = PERMANENT REFERENCE MONUMENT (4"x4" CONCRETE MONUMENT STAMPED "PRM LB353") UNLESS STATED OTHERWISE
- PRP.B.CO. = PUBLIC RECORDS OF PALM BEACH COUNTY
- SECTION 9/46/43 = SECTION 9, TOWNSHIP 46 SOUTH, RANGE 43 EAST
- C.A. = CENTRAL ANGLE
- C.B. = CHORD BEARING



193



33' RIGHT OF WAY PER PLAT BOOK 23, PAGE 68